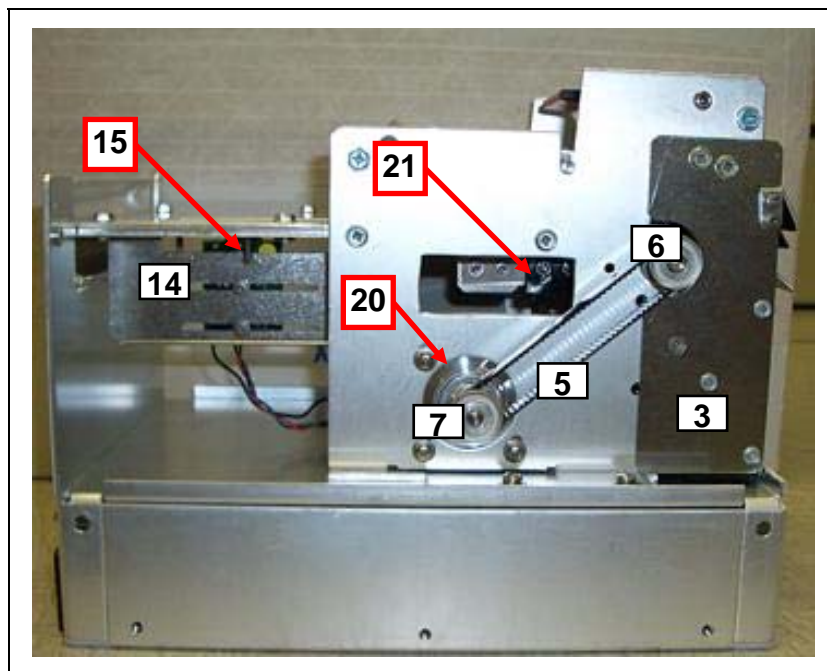


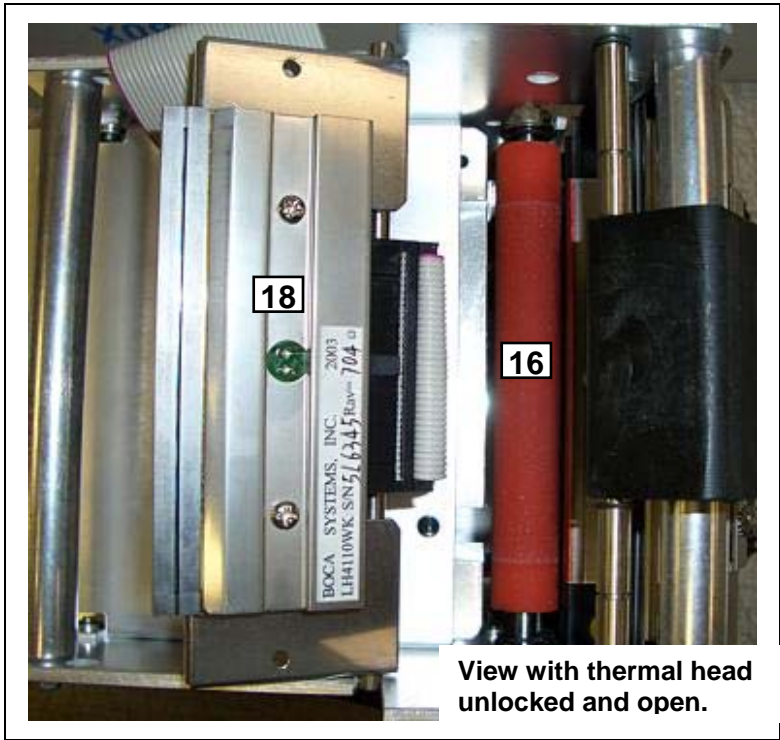
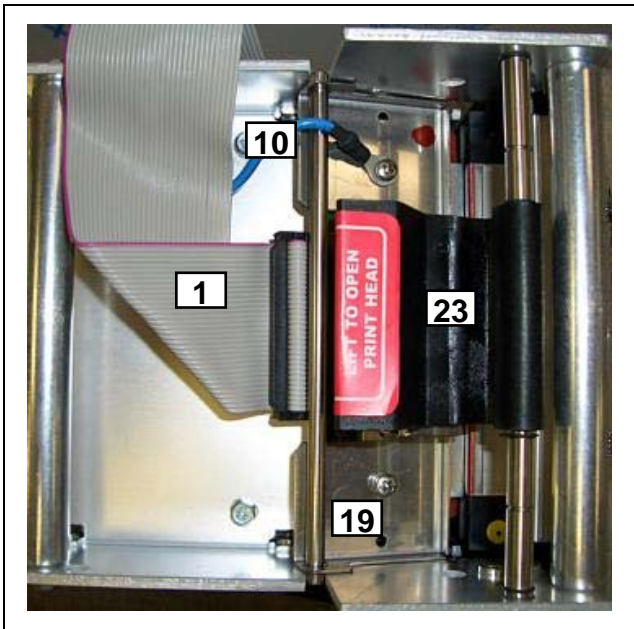
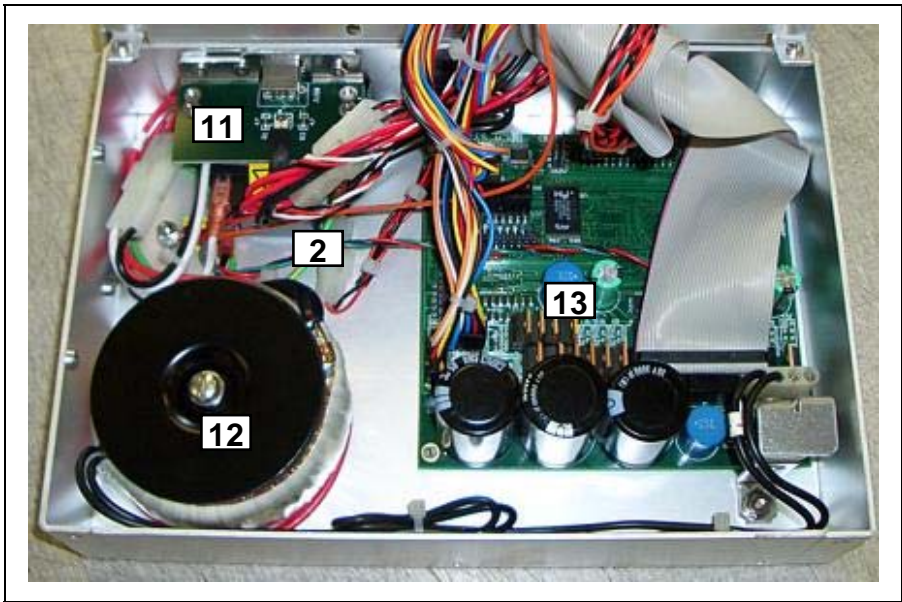
# XATM Spare Parts List

#	Part Number	Qty	Description	Price
1	422557-25	1	Cable Ribbon, Thermal Head	20.00
2	423400	1	Cable, Data Cable USB	10.00
2*	423123	1	Cable Ribbon (for parallel interface)	20.00
2*	423124	1	Cable Ribbon (for STD & PC serial interface)	15.00
2*	423123-E/D	1	Cable Ribbon (for Ethernet interface)	20.00
3	423552	1	Cutter Assembly	275.00
5*	P50-1003	1	Drive Belt, 102T (for 300dpi)	5.30
5	P50-1017	1	Drive Belt, 98T (for 200dpi)	5.30
6*	P51-1011	1	Drive Pulley, 30T (for 300dpi)	8.20
6	P51-1007	1	Drive Pulley, 20T (for 200dpi)	8.20
7	P51-1014	1	Drive Pulley, 20T (for 200dpi & 300dpi)	8.20
8	423480KIN	1	Upper exit deflector	8.00
9	423485	1	Lower Exit Bracket	7.00
10	423192	1	Ground Strap	2.00
11*	422920-6	1	Interface Board, STD Serial	36.00
11*	422920-PC	1	Interface Board, PC Serial	36.00
11*	PAR44	1	Interface Board, Parallel	36.00
12	422888-115	1	Transformer (110VAC)	96.00
12*	422888-230	1	Transformer (230VAC)	96.00
13	FGL24/44X	1	Logic board	560.00
13*	FGL26/46	1	Logic board	660.00
14	421428	1	Opto Bracket	13.00
15	422264	1	Opto Detector Assembly	56.50
16	421508-5M4	1	Platen	61.00
17	P31-1001	1	AC Filter	30.00
18	2003	1	Print Head (for 200dpi)	230.00
18*	3003	1	Print Head (for 300dpi)	230.00
19*	422637-TA	1	Print Head Mounting Block for ADJW	42.00
19*	421359-5MMB	1	Print Head Mounting Block for RADJW	42.00
19	423496	1	Print Head Mounting Plate	42.00
20	422590	1	Stepper Motor	86.60
21	P28-1020	1	Switch, For Ticket Load	12.00
22	P28-1021	1	Switch, Test Button	6.50
23	421724	1	Take Out Head Cam Lock Assembly	22.00
24	P62-1001	1	Anti Static Brush (only)	7.50
25*	P29-1002	1	Fuse, 2amp SB (installed in filter for 110VAC)	1.20
25*	P29-1001	1	Fuse, 1amp SB (installed in filter for 220VAC)	1.20

\* Customer dependent and not shown in photo (items listed are for STD printer version only) Revised 12.05.07

All prices are in US Dollar and don't include freight.







The location of items 22, 17 & 11 is customer dependent and may vary from the above photo.