



# Roll Holder Installation Lemur-X (p/n 424051-U)

This roll holder kit is designed to be used with either a Lemur-X or Lemur-Z model printer. This kit will work with a roll that has a minimum cord inner diameter of 1.0" or greater.

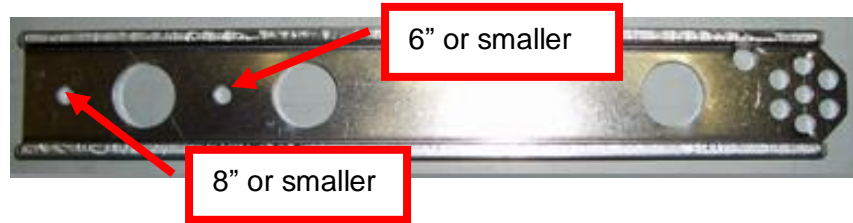
Kit will include mounting plate, roll holder arm, spindle, stopper disc and mounting hardware.



Some parts may look different than the above photo

	2X	3/16" Hex Head #4 Taptite		1X	3/32" Allen head screw
	2X	1/4" Hex Head #8 Taptite		1X	3/32" Allen wrench

1. Attach the spindle onto the roll holder arm using one 1/4" Hex head #8 Taptite screw. There are two mounting locations that may be used depending on roll outer diameter size.



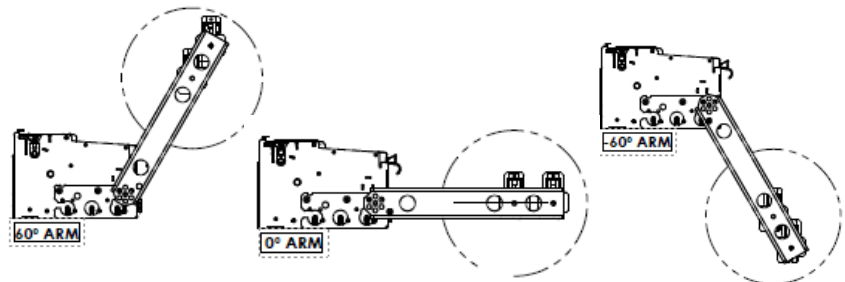
2. Install the roll holder arm mounting plate onto the printer using two 3/16" Hex Head #4 Taptite screws. The plate may be installed on either side of the printer.



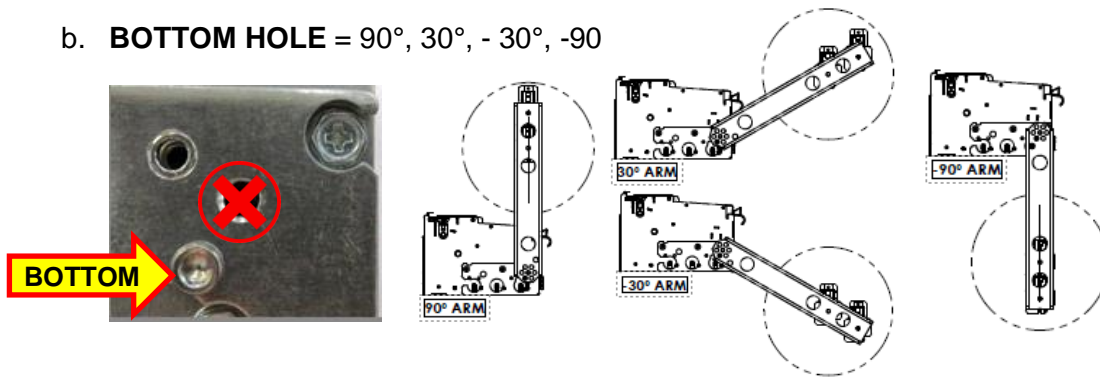
For #8 Taptite screw at step # 4

3. Install the one 3/32" Allen head screw into the mounting plate. Location will depend on the desired angle you want to set the arm at. See last page for diagram of possible arm positions angles.

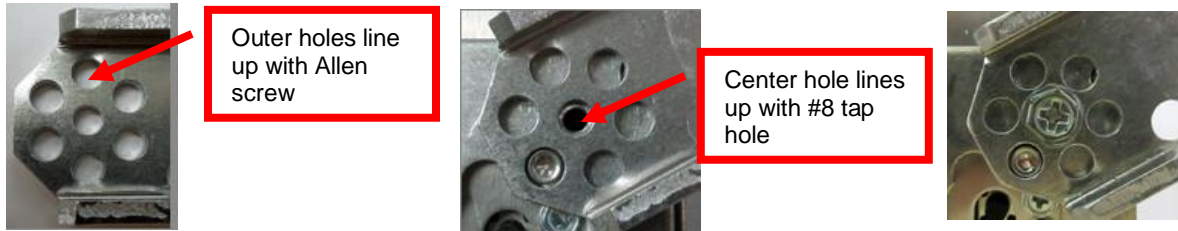
a. **TOP HOLE** = 60°, 0°, - 60°



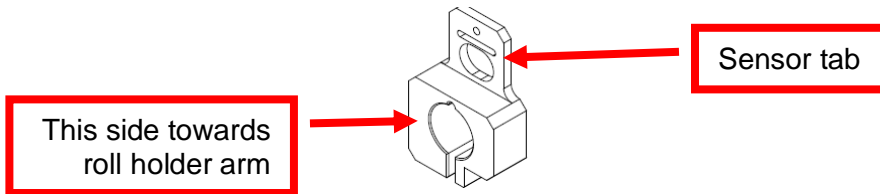
b. **BOTTOM HOLE** = 90°, 30°, -30°, -90



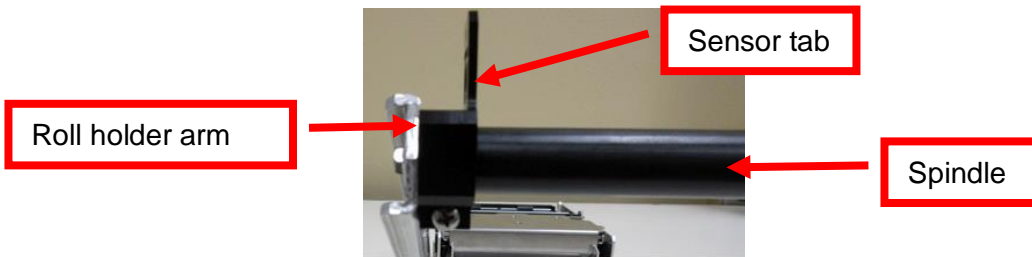
4. Install the roll holder arm onto the mounting plate and secure it in place with the provided 1/4" Hex head #8 Taptite screw. Below photo shows the arm set to the 30° positions. Arm position will vary depending on what degree position is used.



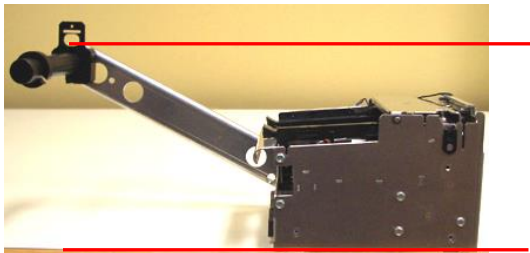
5. Slide the roll holder block onto the spindle with the sensor tab towards the roll.



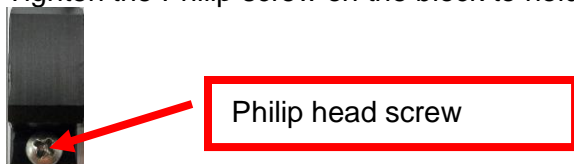
6. Slide the block side the block all the way to the roll holder arm. See below photo.



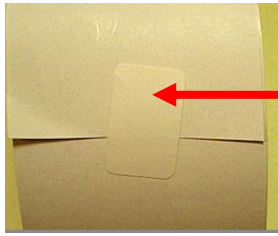
7. Orientate the sensor tab so it is parallel to the floor or bottom of the printer.



8. Tighten the Philip screw on the block to hold it in place.



9. Tear off a full turn of the paper from the new paper roll. **Caution:** *This is important as the outer end of the paper is usually secured to the roll with glue or other adhesive substance that may cause paper jam or damage the print head.*

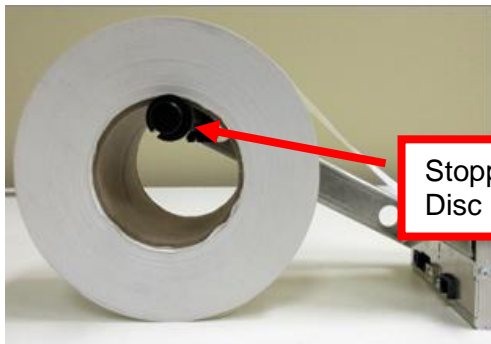


Must be completely removed

10. Place the Receipt roll onto the spindle. If the thermal side of the media is towards the outside of the roll, the roll will turn towards the printer (as shown in the photo below). If the thermal side of the media is towards the inside of the roll, the roll will turn away from the printer.



11. Install the stopper disc onto the spindle and slide into place. The stopper should be positioned to prevent the roll from moving too much from side to side but be allowed to spin freely.

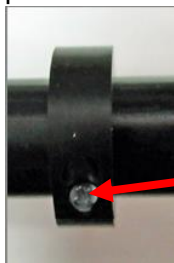


Stopper Disc



Stopper Disc

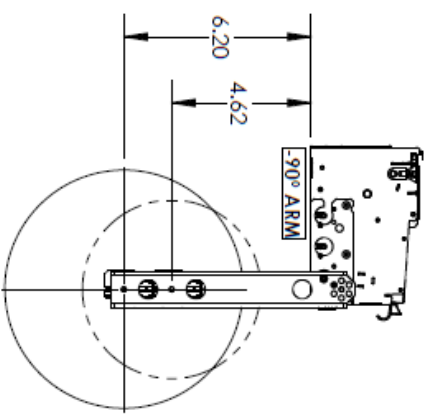
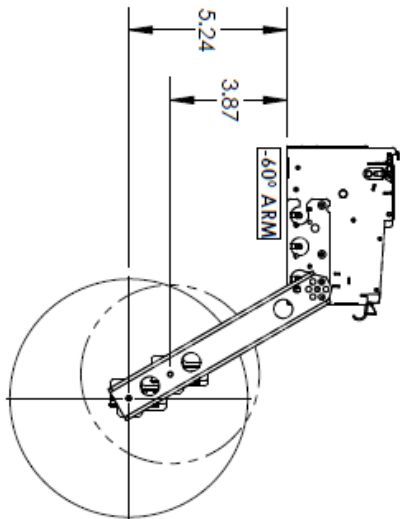
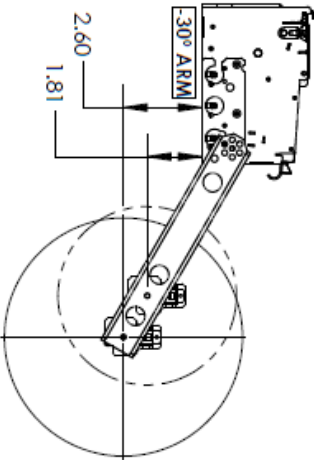
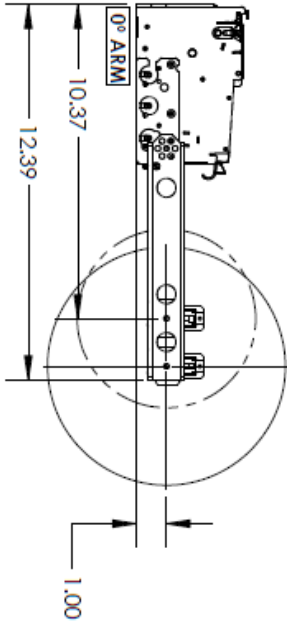
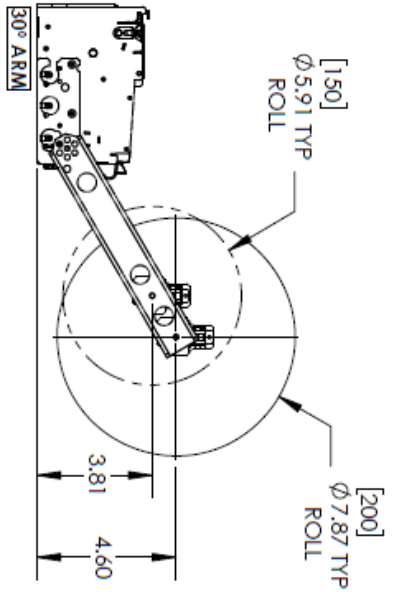
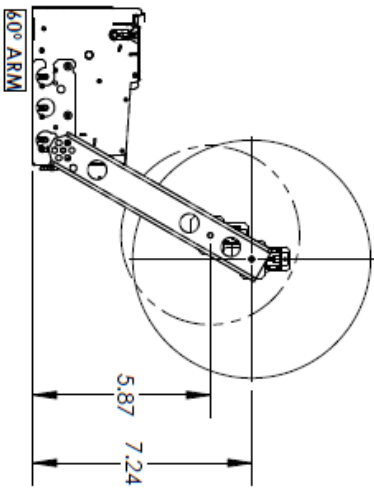
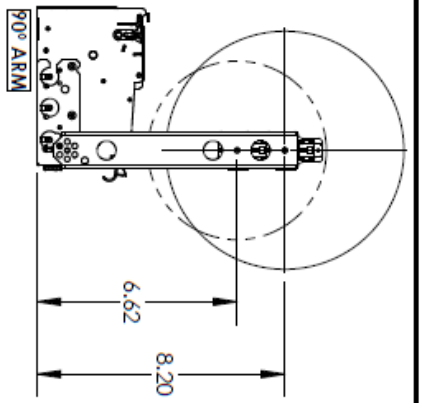
12. Once you have the stopper in the desired position, tighten the Philip head screw to hold the stopper in place.



Philip head screw

13. Once the stopper disc is in place it should not be necessary to remove it to install or remove a roll, provided the roll core inner diameter is 1.0" or greater. The core should slip over the disc.

14. If the roll holder has been configured for use with 58mm center infeed guide you will want to run the printer to ensure media is feeding properly into the printer. If not then make necessary adjustment to the roll holder block and stopper disc for proper alignment with the printer.



RELEASED

WITH 424051-U ROLL HOLDER

REMOVE ALL BURRS & SHARP EDGES		UNLESS SPECIFIED, DIMS ARE IN INCHES		<b>BOCA Systems, Inc.</b>		LEMUR-X-UPG REFERENCE		SCALE: 1:8		SIZE: DRAWING NO. 424127-RF-U		REV. 1.50	
APPLICATION	MODEL	QTY.	FRACTION										
ASSEMBLY	LEMUR-X	LEMUR-X/UPG	0	±	±	±	±	±	±	±	±	±	±
DATE CREATED	6/10/2020		DWN. BY		APPR. BY		SHEET 2 OF 2		A		C		